

JOIN US

For availability, pricing, and more information, email info@ejcpdx.org.

BACKGROUND

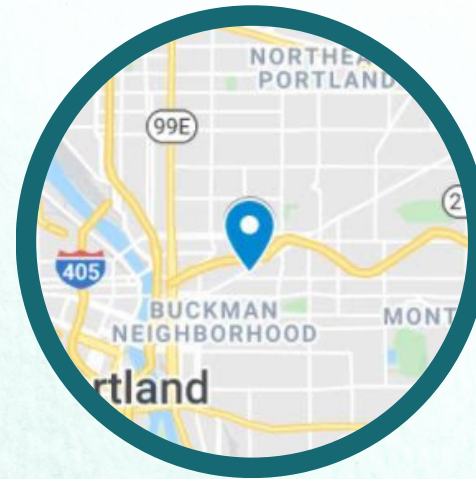
For decades, Eastside community members have dreamed of creating opportunities to engage in Jewish life closer to where they live, work, and play. Now, this dream has come to life!

MISSION

The Eastside Jewish Commons (EJC)'s mission is to create and sustain a lively and inclusive community space on Portland's Eastside, with spiritual, cultural, social, religious, and educational programming.

WHO WE ARE

- A non-profit led by a Board of Directors & dedicated staff.
- 70+ community "stakeholders" contributing time, treasure, and talent.
- 24 community organizations hosting programming and activities.
- 4 organizations co-located at EJC: Congregation Shir Tikvah, OneTable, TischPDX, and Co/Lab PDX.



OPTIONS

Priority given to those aligned with EJC's mission.

"THE HIVE" DESK USER

- Join our vibrant professional community in a shared co-working space.
- Includes standing desk, chair, and storage; use of a small meeting room; and time in larger rooms. Additional room time can be booked for modest fees.
- One, two, and three day options are also available.

FLEX COMMONS USER

- Ideal for the community member looking to work for a few hours in an open public area, with wifi, nice light, and coffee/tea.
- Users can book meetings in private rooms for modest fees.

RECURRING EVENT/PROGRAM HOST

- Ideal for the community member interested in hosting a recurring event or program series, such as a class or social gathering.
- Includes option to work in open public areas and book meetings in private rooms for modest fees.

EVENT HOST

- Ideal for the community member interested in hosting an event, such as a party, concert, B'nei Mitzvah service, etc.
- Includes access to tables, chairs, AV equipment, ritual items, and more.



The Atrium

- Capacity: 110
- 5,000 Sq. ft
- Tables, chairs, couches - many configurations possible!

Available Hybrid Equipment

- Monitor, laptop for Zoom, slideshows, films
- Speakers, standing mic, wireless mic
- AV staff available for hourly fee



Prayer Space

- Capacity: 30
- 550 Sq. ft
- Ark, access to Torah scrolls, chairs, table for Torah reading/prayer leading



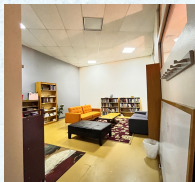
Private Office

- Corner office ideal for 1-4 individuals.
- 383 Sq. ft
- Windows, closet, built-in desk, shelving, and cabinets, wood floor, and chalkboard-painted wall.



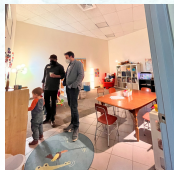
Art Room

- Capacity: 12
- 300 Sq. ft
- Whiteboards, table, chairs



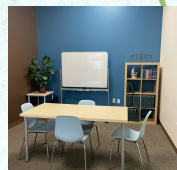
The Lounge

- Capacity: 12
- 260 Sq. ft
- Couches, books



Kid's Room

- Capacity: 12
- 320 Sq. ft
- Toys, books, kids furniture



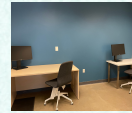
Tutoring Room

- Capacity: 8
- 185 Sq. ft
- Whiteboard, table, chairs



The Shed

- Capacity: 6
- Whiteboard, table, chairs
- 105 Sq. ft



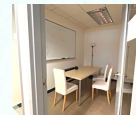
Private Office

- Ideal for a small company/individual
 - 120 Sq. ft
 - Windows, desks.



Conference Room

- Capacity: 30
- 715 Sq. ft
- Whiteboards, tables, chairs



Hive Zoom Room

- Reserved for Hive desk users.
- 84 Sq. ft
- Whiteboard, table, chairs



The Hive

- 8 cubicles with stand-up desks
- 736 Sq. ft
- See other side for details!



Back Office

- 49 Sq. ft
- Desk, chair, shelves



Our Building

- ADA-accessible ground floor
- transit and bike street access
- street parking
- central location



EASTSIDE JEWISH COMMONS

2420 NE Sandy Blvd. Portland, OR 97232 / ejcpdx.org

For availability, pricing, and more information, email info@ejcpdx.org.